

# 3060VN

30" x 60" x 23"

**Installation:** Drop-in  
cannot be under mounted

## GENERAL SPECIFICATIONS:

**Material** Acrylic

**Plumbed Weight :** 160lbs / 73 kg

**Soaker Weight :** 130 lbs / 59 kg

**Average Fill:** 50 gal to above jet level

## ELECTRICAL SPECIFICATIONS:

Required Electrical

Service 110 Volt

Air Bath or Whirlpool

1-15 amp GFCI

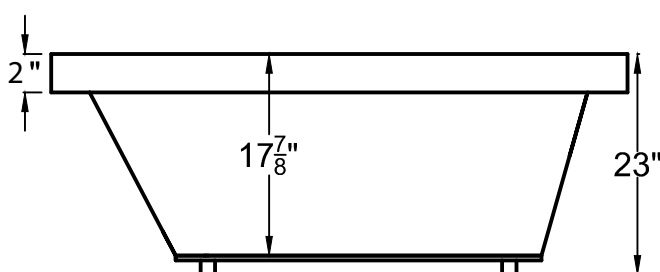
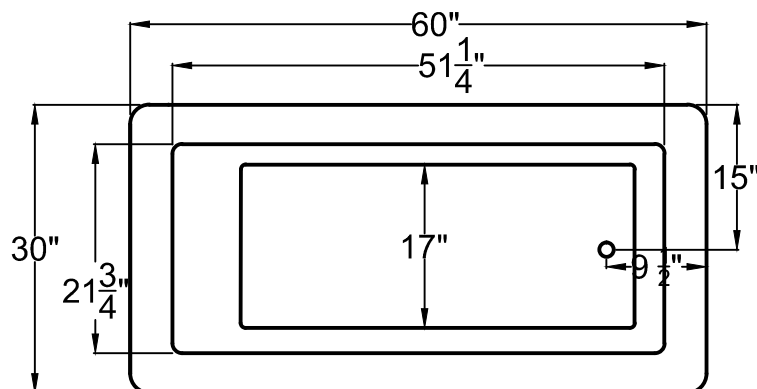
Whirlpool with Inline Heater

1-20amp GFCI

Whirlpool and Air

1-20 amp GFCI

Soaker



## PACKAGES AND OPTIONS

Hydrotherapy Package	Package Contents	Part #
Soaker	Soaking bath - no jets, textured bottom	3060VNS
Whirlpool	Adjustable pointed-massage jets, 1-hp pump, textured bottom	3060VNH
Air Bath	Air jets, Air blower, Textured bottom	3060VNA
Whirlpool and Air	Adjustable pointed-massage jets, 1-hp pump, Air jets, Air blower, textured bottom	3060VND

## OPTIONS

Colors Available - White Biscuit

Quick Ship - reduces lead time - call for availability

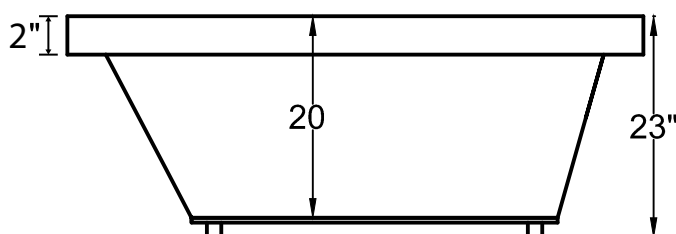
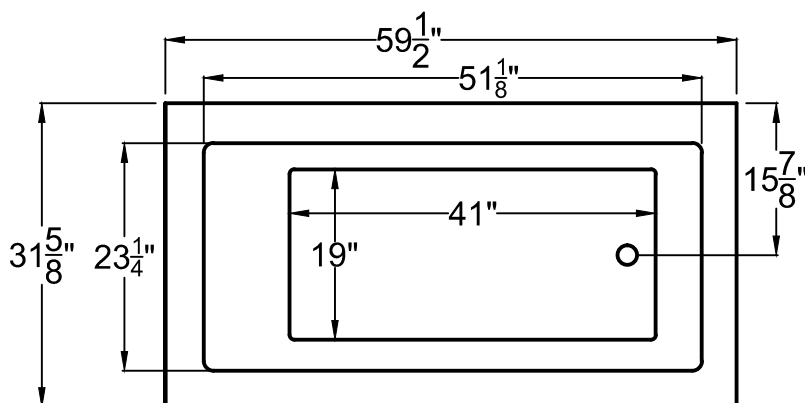
Inline Heater with Pump - Whirlpool or Whirlpool and Air

Lift & Turn Drain Kit -Chrome,Brushed Nickel, White

Color Match Jets.

## IMPORTANT INFORMATION

- Before ordering or installing, please consider future access to equipment.
- Add bedding compound to fully level and support bottom of tub.
- Tubs equipped with an air bath or a pre-leveled foam base are designed to rest on the floor without bedding compound, provided the floor is level.
- Please measure tub on-site before building tub decking.
- Jet, pump & blower locations are predetermined and cannot be changed.
- Suction and control locations may vary.
- Specifications and configurations are subject to change without notice.
- Measurements are +1/2" and are subject to change without notice.
- Measurements herein supersede all others published prior to publication date shown below.



# 3260VN

32<sup>5</sup>/<sub>8</sub>" x 59<sup>1</sup>/<sub>2</sub>" x 23"

**Installation:** Drop-in  
cannot be under mounted

## GENERAL SPECIFICATIONS:

**Material** Acrylic

**Plumbed Weight :** 160lbs / 73 kg

**Soaker Weight :** 130 lbs / 59 kg

**Average Fill:** 55 gal to above jet level

## ELECTRICAL SPECIFICATIONS:

Required Electrical Service 110 Volt

Air Bath or Whirlpool 1-15 amp GFCI

Whirlpool with Inline Heater 1-20 amp GFCI

Whirlpool and Air 1-20 amp GFCI

Soaker

## PACKAGES AND OPTIONS

Hydrotherapy Package	Package Contents	Part #
Soaker	Soaking bath - no jets, textured bottom	3260VNS
Whirlpool	Adjustable pointed-massage jets, 1-hp pump, textured bottom	3260VNH
Air Bath	Air jets, Air blower, Textured bottom	3260VNA
Whirlpool and Air	Adjustable pointed-massage jets, 1-hp pump, Air jets, Air blower, textured bottom	3260VND

## OPTIONS

Colors Available - White Biscuit

Quick Ship - reduces lead time - call for availability

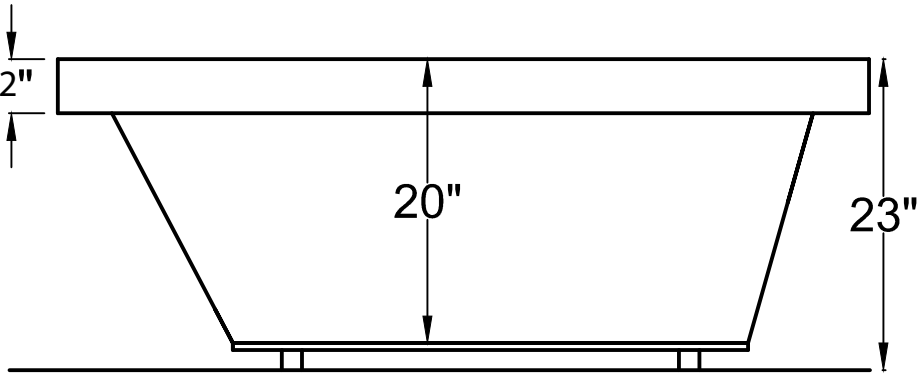
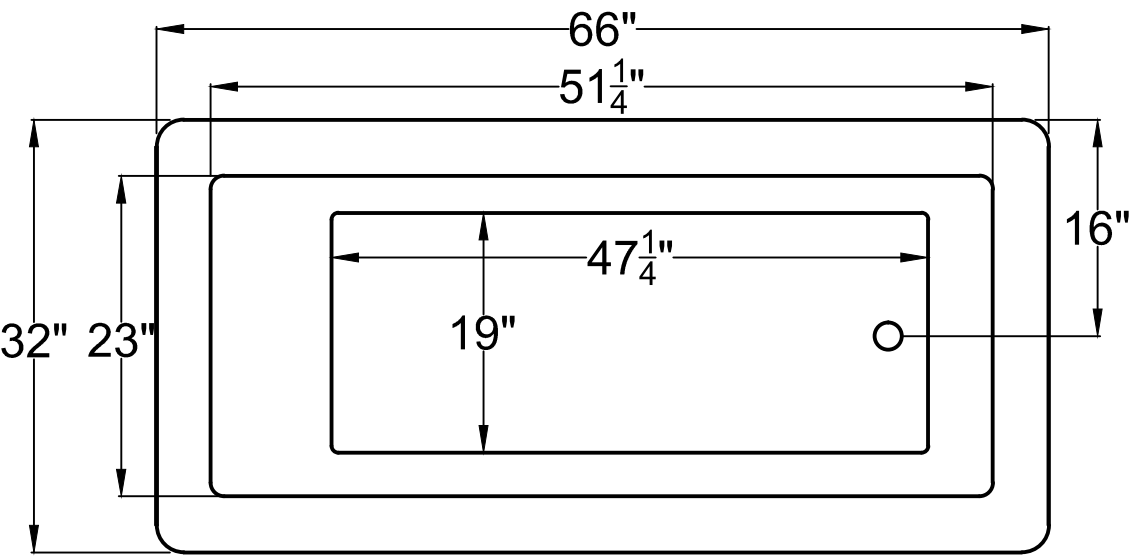
Inline Heater with Pump - Whirlpool or Whirlpool and Air

Lift & Turn Drain Kit -Chrome,Brushed Nickel, White

Color Match Jets.

## IMPORTANT INFORMATION

- Before ordering or installing, please consider future access to equipment.
- Add bedding compound to fully level and support bottom of tub.
- Tubs equipped with an air bath or a pre-leveled foam base are designed to rest on the floor without bedding compound, provided the floor is level.
- Please measure tub on-site before building tub decking.
- Jet, pump & blower locations are predetermined and cannot be changed.
- Suction and control locations may vary.
- Specifications and configurations are subject to change without notice.
- Measurements are +1/2" and are subject to change without notice.
- Measurements herein supersede all others published prior to publication date shown below.



3266VN

32" x 66" x 23"

Installation: Drop-in  
cannot be under mounted

GENERAL SPECIFICATIONS:

Material Acrylic  
Plumbed Weight : 160lbs / 73kg  
Soaker Weight : 130lbs /59kg  
Average Fill: 60gal to above jet level

ELECTRICAL SPECIFICATIONS:

Required Electrical	Service 110 Volt
Air Bath or Whirlpool	1-15 amp GFCI
Whirlpool with Inline Heater	1-20 amp GFCI
Dual Bath	1-20 amp GFCI
Soaker	

PACKAGES AND OPTIONS

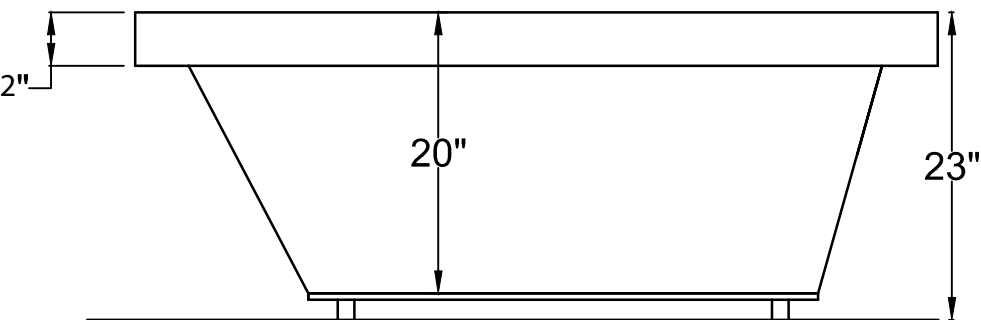
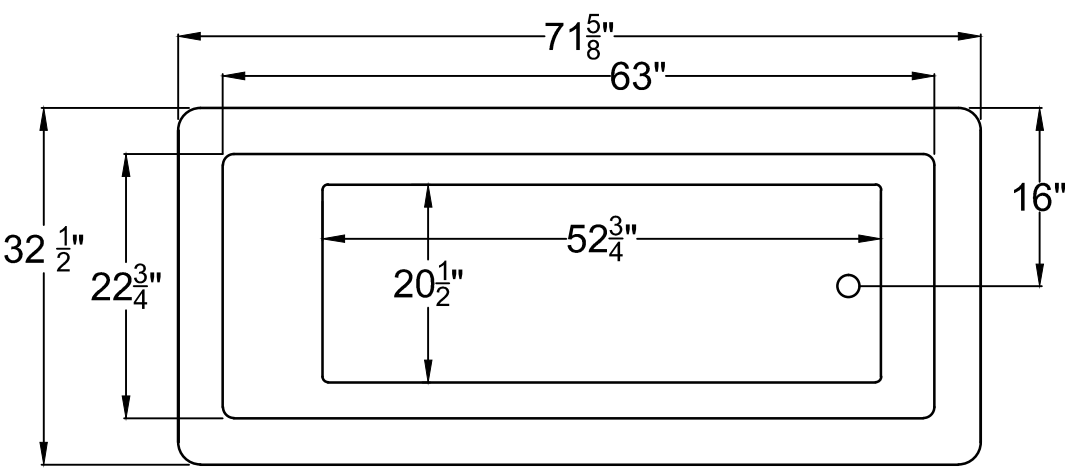
Hydrotherapy Package	Package Contents	Part #
Soaker	soaking bath - no jets, textured bottom	3266VNS
Whirlpool	8point-massage jets, 1-hp pump, textured bottom	3266VNH
Air Bath	31 air jets, air blower, textured bottom	3266VNA
Dual Bath	8 point-massage jets, 1-hp pump, 31 air jets, air blower, textured bottom	3266VND

OPTIONS

Colors Available - White Biscuit  
Quick Ship - reduces lead time - call for availability  
Inline Heater with Pump - Whirlpool or Dual Bath  
Lift & Turn Drain Kit -Chrome,Brushed Nickel, White

IMPORTANT INFORMATION

- Before ordering or installing, please consider future access to equipment.
  - Add bedding compound to fully level and support bottom of tub.
  - Tubs equipped with an air bath or a pre-leveled foam base are designed to rest on the floor without bedding compound, provided the floor is level.
  - Please measure tub on-site before building tub decking.
  - Jet, pump & blower locations are predetermined and cannot be changed.
- Suction and control locations may vary.
  - Specifications and configurations are subject to change without notice.
  - Measurements are +1/2" and are subject to change without notice.
  - Measurements herein supersede all others published prior to publication date shown below.



3272VN

32" x 72" x 23"

Installation: Drop-in  
cannot be under mounted

GENERAL SPECIFICATIONS:  
Material Acrylic  
Plumbed Weight : 165lbs / 75kg  
Soaker Weight : 135lbs / 61kg  
Average Fill: 65 gal to above jet level

ELECTRICAL SPECIFICATIONS:

Required Electrical	Service 110 Volt
Air Bath or Whirlpool	1-15 amp GFCI
Whirlpool with Inline Heater	1-20 amp GFCI
Dual Bath	1-20 amp GFCI
Soaker	

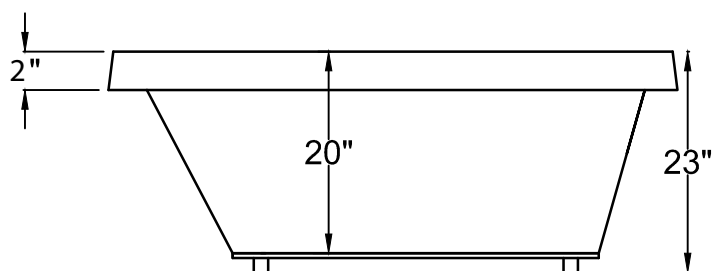
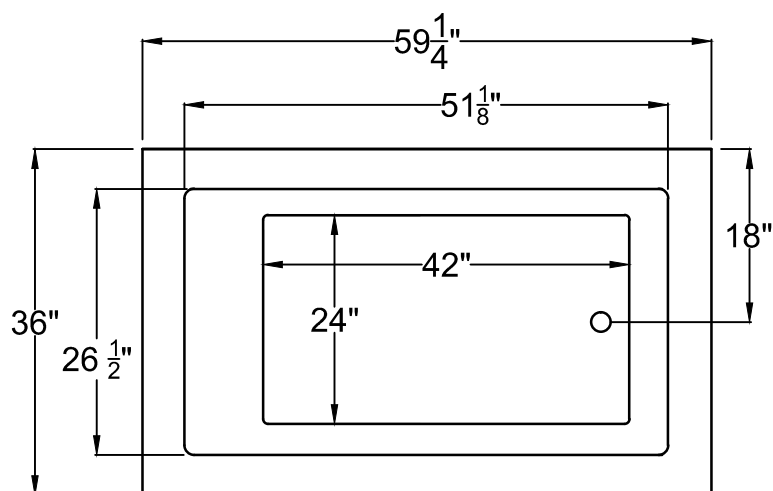
PACKAGES AND OPTIONS

Hydrotherapy Package	Package Contents	Part #
Soaker	soaking bath - no jets, textured bottom	3272VNS
Whirlpool	8point-massage jets, 1-hp pump, textured bottom	3272VNH
Air Bath	12 air jets, air blower, textured bottom	3272VNA
Dual Bath	8 point-massage jets, 1-hp pump, 12 air jets, air blower, textured bottom	3272VND

OPTIONS  
Colors Available - White Biscuit  
Quick Ship - reduces lead time - call for availability  
Inline Heater with Pump - Whirlpool or Dual Bath  
Lift & Turn Drain Kit -Chrome,Brushed Nickel, White

IMPORTANT INFORMATION

- Before ordering or installing, please consider future access to equipment.
  - Add bedding compound to fully level and support bottom of tub.
  - Tubs equipped with an air bath or a pre-leveled foam base are designed to rest on the floor without bedding compound, provided the floor is level.
  - Please measure tub on-site before building tub decking.
  - Jet, pump & blower locations are predetermined and cannot be changed.
- Suction and control locations may vary.
  - Specifications and configurations are subject to change without notice.
  - Measurements are +1/2" and are subject to change without notice.
  - Measurements herein supersede all others published prior to publication date shown below.



# 3660VN

36" x 59 $\frac{1}{4}$ " x 23"

**Installation:** Drop-in  
cannot be under mounted

## GENERAL SPECIFICATIONS:

**Material** Acrylic

**Plumbed Weight** : 160lbs / 73 kg

**Soaker Weight** :130 lbs / 59 kg

**Average Fill:** 45 gal to above jet level

## ELECTRICAL SPECIFICATIONS:

Required Electrical Service 110 Volt

Air Bath or Whirlpool 1-15 amp GFCI

Whirlpool with Inline Heater 1-20 amp GFCI

Whirlpool and Air 1-20 amp GFCI

Soaker

## PACKAGES AND OPTIONS

Hydrotherapy Package	Package Contents	Part #
Soaker	Soaking bath - no jets, textured bottom	3660VNS
Whirlpool	Adjustable pointed-massage jets, 1-hp pump, textured bottom	3660VNH
Air Bath	Air jets, Air blower, Textured bottom	3660VNA
Whirlpool and Air	Adjustable pointed-massage jets, 1-hp pump, Air jets, Air blower, textured bottom	3660VND

## OPTIONS

Colors Available - White Biscuit

Quick Ship - reduces lead time - call for availability

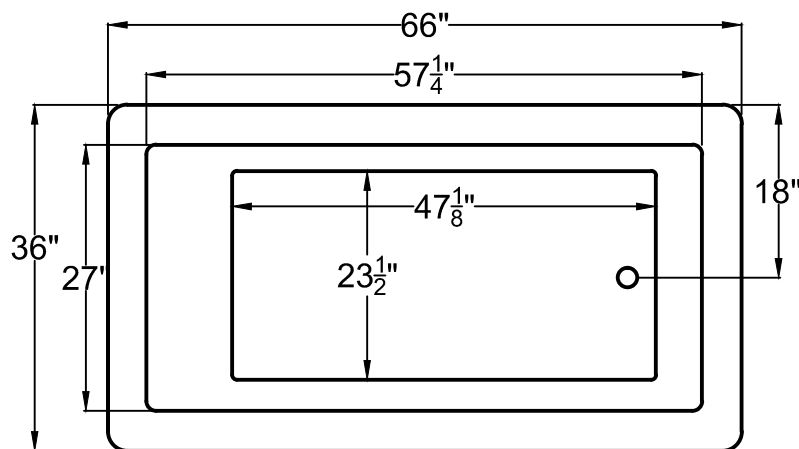
Inline Heater with Pump - Whirlpool or Whirlpool and Air

Lift & Turn Drain Kit -Chrome,Brushed Nickel, White

Color Match Jets.

## IMPORTANT INFORMATION

- Before ordering or installing, please consider future access to equipment.
- Add bedding compound to fully level and support bottom of tub.
- Tubs equipped with an air bath or a pre-leveled foam base are designed to rest on the floor without bedding compound, provided the floor is level.
- Please measure tub on-site before building tub decking.
- Jet, pump & blower locations are predetermined and cannot be changed.
- Suction and control locations may vary.
- Specifications and configurations are subject to change without notice.
- Measurements are +1/2" and are subject to change without notice.
- Measurements herein supersede all others published prior to publication date shown below.



**3666VN**

**36" x 66" x 23"**

**Installation:** Drop-in  
cannot be under mounted

**GENERAL SPECIFICATIONS:**

**Material** Acrylic

**Plumbed Weight :** 160lbs / 73kg

**Soaker Weight :** 130 lbs / 59 kg

**Average Fill:** 60 gal to above jet level

**ELECTRICAL SPECIFICATIONS:**

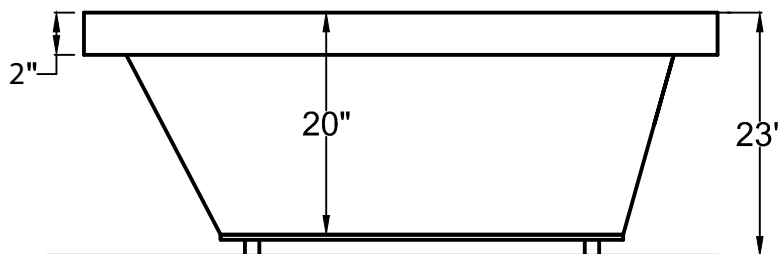
Required Electrical Service 110 Volt

Air Bath or Whirlpool 1-15 amp GFCI

Whirlpool with Inline Heater 1-20 amp GFCI

Whirlpool and Air 1-20 amp GFCI

Soaker



**PACKAGES AND OPTIONS**

Hydrotherapy Package	Package Contents	Part #
<b>Soaker</b>	Soaking bath - no jets, textured bottom	3666VNS
<b>Whirlpool</b>	Adjustable pointed-massage jets, 1-hp pump, textured bottom	3666VNH
<b>Air Bath</b>	Air jets, Air blower, Textured bottom	3666VNA
<b>Whirlpool and Air</b>	Adjustable pointed-massage jets, 1-hp pump, Air jets, Air blower, textured bottom	3666VND

**OPTIONS**

Colors Available - White Biscuit

Quick Ship - reduces lead time - call for availability

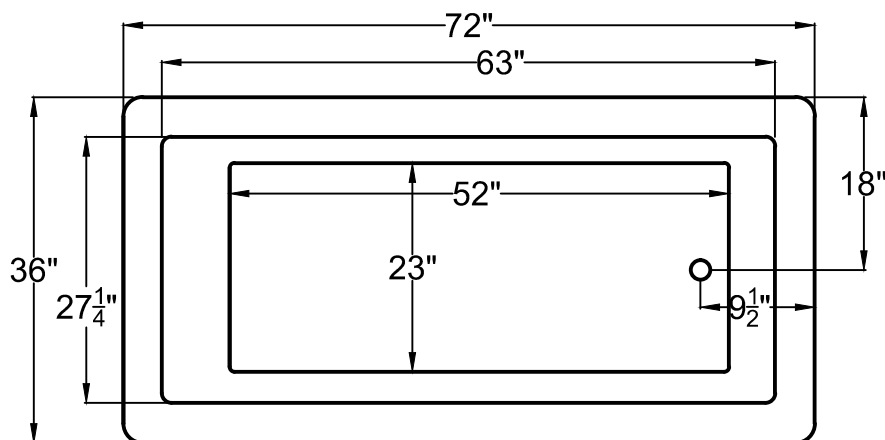
Inline Heater with Pump - Whirlpool or Whirlpool and Air

Lift & Turn Drain Kit -Chrome,Brushed Nickel, White

Color Match Jets.

**IMPORTANT INFORMATION**

- Before ordering or installing, please consider future access to equipment.
- Add bedding compound to fully level and support bottom of tub.
- Tubs equipped with an air bath or a pre-leveled foam base are designed to rest on the floor without bedding compound, provided the floor is level.
- Please measure tub on-site before building tub decking.
- Jet, pump & blower locations are predetermined and cannot be changed.
- Suction and control locations may vary.
- Specifications and configurations are subject to change without notice.
- Measurements are +1/2" and are subject to change without notice.
- Measurements herein supersede all others published prior to publication date shown below.



**3672VN**

**36" x 72" x 23"**

**Installation:** Drop-in  
cannot be under mounted

**GENERAL SPECIFICATIONS:**

**Material** Acrylic

**Plumbed Weight :** 165lbs / 75 kg

**Soaker Weight :** 135 lbs / 61 kg

**Average Fill:** 65 gal to above jet level

**ELECTRICAL SPECIFICATIONS:**

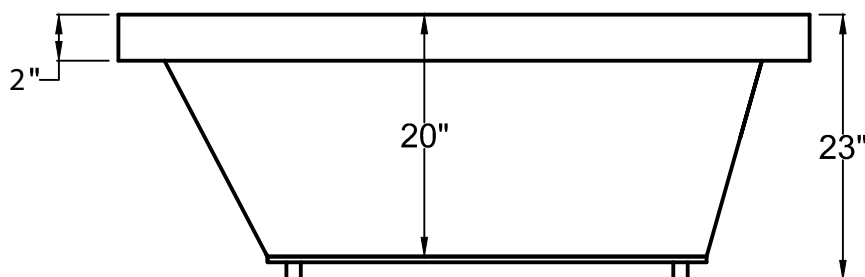
Required Electrical Service 110 Volt

Air Bath or Whirlpool 1-15 amp GFCI

Whirlpool with Inline Heater 1-20 amp GFCI

Whirlpool and Air 1-20 amp GFCI

Soaker



**PACKAGES AND OPTIONS**

Hydrotherapy Package	Package Contents	Part #
Soaker	Soaking bath - no jets, textured bottom	3672VNS
Whirlpool	Adjustable pointed-massage jets, 1-hp pump, textured bottom	3672VNH
Air Bath	Air jets, Air blower, Textured bottom	3672VNA
Whirlpool and Air	Adjustable pointed-massage jets, 1-hp pump, Air jets, Air blower, textured bottom	3672VND

**OPTIONS**

Colors Available - White Biscuit

Quick Ship - reduces lead time - call for availability

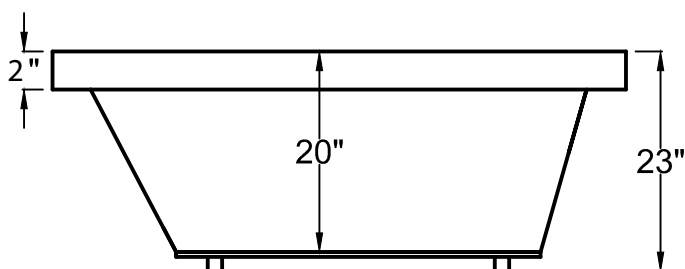
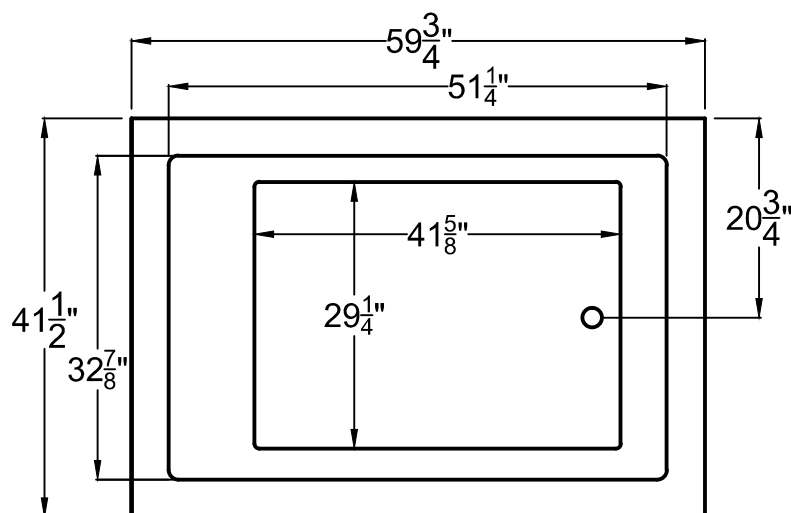
Inline Heater with Pump - Whirlpool or Whirlpool and Air

Lift & Turn Drain Kit -Chrome,Brushed Nickel, White

Color Match Jets.

**IMPORTANT INFORMATION**

- Before ordering or installing, please consider future access to equipment.
- Add bedding compound to fully level and support bottom of tub.
- Tubs equipped with an air bath or a pre-leveled foam base are designed to rest on the floor without bedding compound, provided the floor is level.
- Please measure tub on-site before building tub decking.
- Jet, pump & blower locations are predetermined and cannot be changed.
- Suction and control locations may vary.
- Specifications and configurations are subject to change without notice.
- Measurements are +1/2" and are subject to change without notice.
- Measurements herein supersede all others published prior to publication date shown below.



**4260VN**

41<sup>1</sup>/<sub>2</sub>" x 59<sup>3</sup>/<sub>4</sub>" x 23"

**Installation:** Drop-in  
cannot be under mounted

**GENERAL SPECIFICATIONS:**

**Material** Acrylic

**Plumbed Weight :** 170lbs / 77kg

**Soaker Weight :** 140lbs / 63kg

**Average Fill:** 70 gal to above jet level

**ELECTRICAL SPECIFICATIONS:**

Required Electrical Service 110 Volt

Air Bath or Whirlpool 1-15 amp GFCI

Whirlpool with Inline Heater 1-20 amp GFCI

Whirlpool and Air 1-20 amp GFCI

Soaker

**PACKAGES AND OPTIONS**

Hydrotherapy Package	Package Contents	Part #
Soaker	Soaking bath - no jets, textured bottom	4260VNS
Whirlpool	Adjustable pointed-massage jets, 1-hp pump, textured bottom	4260VNH
Air Bath	Air jets, Air blower, Textured bottom	4260VNA
Whirlpool and Air	Adjustable pointed-massage jets, 1-hp pump, Air jets, Air blower, textured bottom	4260VND

**OPTIONS**

Colors Available - White Biscuit

Quick Ship - reduces lead time - call for availability

Inline Heater with Pump - Whirlpool or Whirlpool and Air

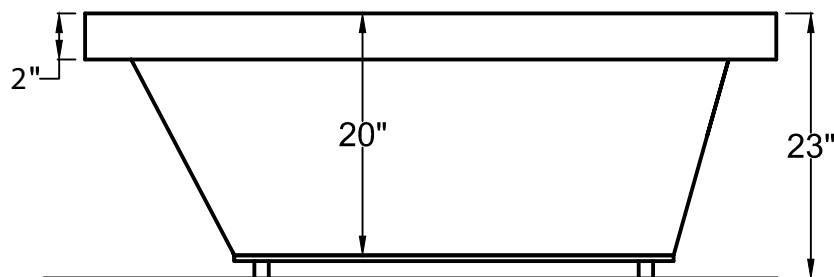
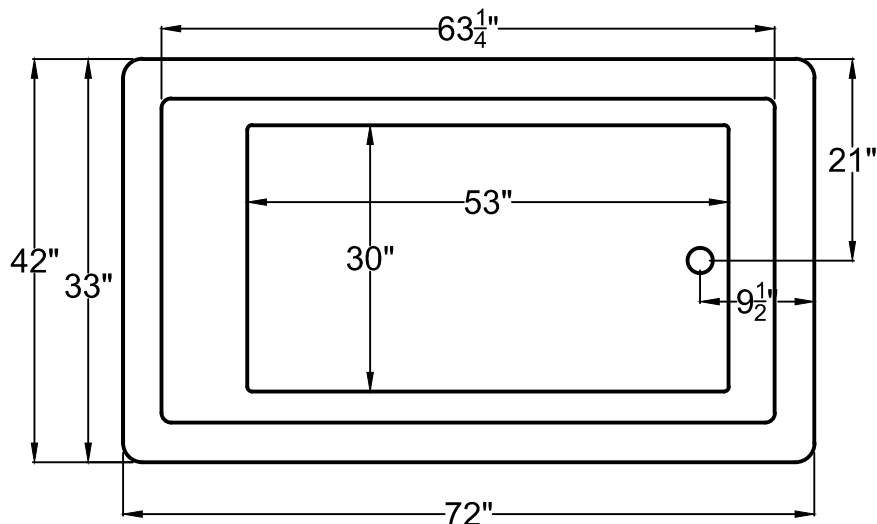
Lift & Turn Drain Kit -Chrome,Brushed Nickel, White

Color Match Jets.

**IMPORTANT INFORMATION**

- Before ordering or installing, please consider future access to equipment.
- Add bedding compound to fully level and support bottom of tub.
- Tubs equipped with an air bath or a pre-leveled foam base are designed to rest on the floor without bedding compound, provided the floor is level.
- Please measure tub on-site before building tub decking.
- Jet, pump & blower locations are predetermined and cannot be changed.
- Suction and control locations may vary.
- Specifications and configurations are subject to change without notice.
- Measurements are +1/2" and are subject to change without notice.
- Measurements herein supersede all others published prior to publication date shown below.





**4272VN**

**42" x 72" x 23"**

**Installation:** Drop-in  
cannot be under mounted

**GENERAL SPECIFICATIONS:**

**Material** Acrylic

**Plumbed Weight :** 170lbs / 77kg

**Soaker Weight :** 140 lbs / 64 kg

**Average Fill:** 75 gal to above jet level

**ELECTRICAL SPECIFICATIONS:**

Required Electrical Service 110 Volt

Air Bath or Whirlpool 1-15 amp GFCI

Whirlpool with Inline Heater 1-20 amp GFCI

Whirlpool and Air 1-20 amp GFCI

Soaker

**PACKAGES AND OPTIONS**

Hydrotherapy Package	Package Contents	Part #
Soaker	Soaking bath - no jets, textured bottom	4272VNS
Whirlpool	Adjustable pointed-massage jets, 1-hp pump, textured bottom	4272VNH
Air Bath	Air jets, Air blower, Textured bottom	4272VNA
Whirlpool and Air	Adjustable pointed-massage jets, 1-hp pump, Air jets, Air blower, textured bottom	4272VND

**OPTIONS**

Colors Available - White Biscuit

Quick Ship - reduces lead time - call for availability

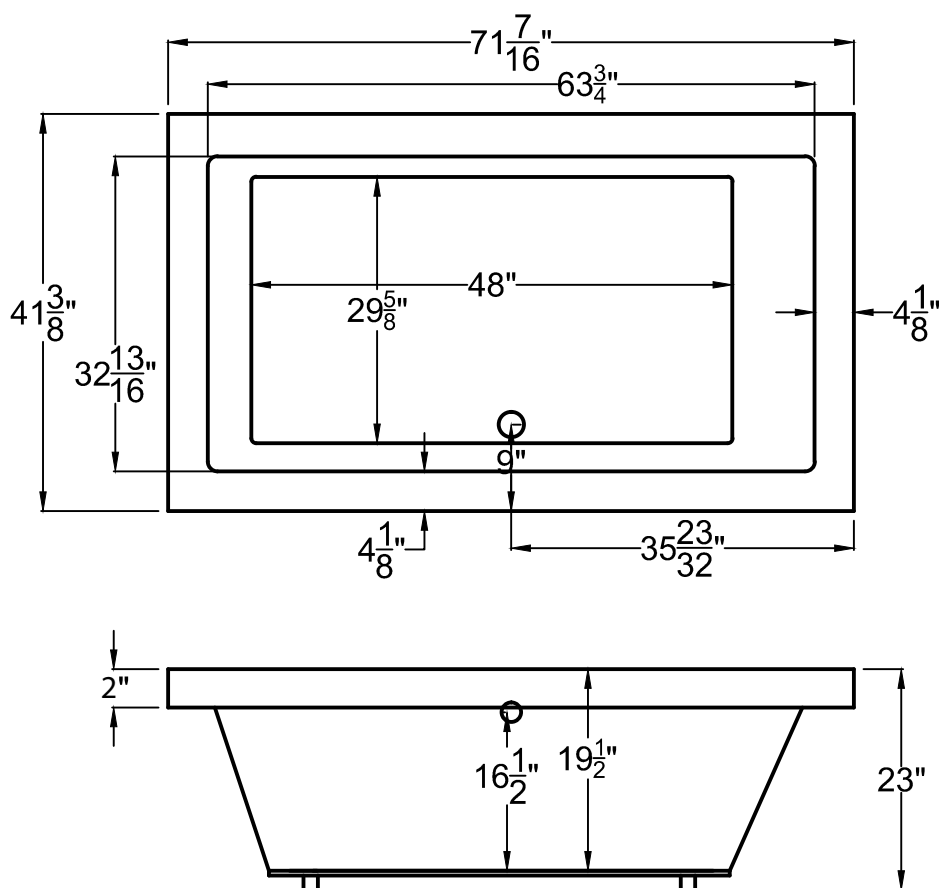
Inline Heater with Pump - Whirlpool or Whirlpool and Air

Lift & Turn Drain Kit -Chrome,Brushed Nickel, White

Color Match Jets.

**IMPORTANT INFORMATION**

- Before ordering or installing, please consider future access to equipment.
- Add bedding compound to fully level and support bottom of tub.
- Tubs equipped with an air bath or a pre-leveled foam base are designed to rest on the floor without bedding compound, provided the floor is level.
- Please measure tub on-site before building tub decking.
- Jet, pump & blower locations are predetermined and cannot be changed.
- Suction and control locations may vary.
- Specifications and configurations are subject to change without notice.
- Measurements are +1/2" and are subject to change without notice.
- Measurements herein supersede all others published prior to publication date shown below.



**4272VNC**  
 41 3/8" x 71 7/16" x 23"

**Installation:** Drop-in  
 cannot be under mounted

**GENERAL SPECIFICATIONS:**

**Material** Acrylic

**Plumbed Weight :** 170lbs / 77kg

**Soaker Weight :** 140 lbs / 63kg

**Average Fill:** 45 gal to above jet level

**ELECTRICAL SPECIFICATIONS:**

Required Electrical Service 110 Volt

Air Bath or Whirlpool 1-15 amp GFCI

Whirlpool with Inline Heater 1-20 amp GFCI

Whirlpool and Air 1-20 amp GFCI

Soaker

**PACKAGES AND OPTIONS**

Hydrotherapy Package	Package Contents	Part #
Soaker	Soaking bath - no jets, textured bottom	4272VNCS
Whirlpool	Adjustable pointed-massage jets, 1-hp pump, textured bottom	4272VNCH
Air Bath	Air jets, Air blower, Textured bottom	4272VNCA
Whirlpool and Air	Adjustable pointed-massage jets, 1-hp pump, Air jets, Air blower, textured bottom	4272VNCD

**OPTIONS**

Colors Available - White Biscuit

Quick Ship - reduces lead time - call for availability

Inline Heater with Pump - Whirlpool or Whirlpool and Air

Lift & Turn Drain Kit -Chrome,Brushed Nickel, White

Color Match Jets.

**IMPORTANT INFORMATION**

- Before ordering or installing, please consider future access to equipment.
- Add bedding compound to fully level and support bottom of tub.
- Tubs equipped with an air bath or a pre-leveled foam base are designed to rest on the floor without bedding compound, provided the floor is level.
- Please measure tub on-site before building tub decking.
- Jet, pump & blower locations are predetermined and cannot be changed.
- Suction and control locations may vary.
- Specifications and configurations are subject to change without notice.
- Measurements are +1/2" and are subject to change without notice.
- Measurements herein supersede all others published prior to publication date shown below.